

October 26, 2005

The Honorable Mayor Susan W. Kluttz,
City Council, City Manager,
and the Citizens of the
City of Salisbury, North Carolina

We are pleased to present the Comprehensive Annual Financial Report (Report) of the City of Salisbury (City) for the fiscal year ended June 30, 2005 (FY05). We are particularly proud of the fact this Report has been entirely prepared by the City's Management Services Department. Responsibility for both the accuracy of the data presented and the completeness and fairness of presentation, including all disclosures, rests with the City. We believe the data is accurate in all material respects, and it is presented in a manner designed to set forth fairly the financial position and the results of operations of the City as measured by the financial activity of its various funds. All disclosures necessary to enable the reader to gain the maximum understanding of the City's financial affairs have been included. The accompanying financial statements have been audited by Martin Starnes & Associates, CPAs, P.A., an independent firm of certified public accountants, and their opinion is included in the Report.

Generally accepted accounting principles require that management provide a narrative introduction, overview, and analysis to accompany the basic financial statements in the form of a Management's Discussion and Analysis (MD&A). This letter of transmittal is designed to complement the MD&A and should be read in conjunction with it.

GENERAL

The financial statements have been prepared in compliance with applicable requirements of the General Statutes of North Carolina and are consistent with the standards and guidelines recognized for governmental accounting and reporting contained in both *Audits of State and Local Governmental Units*, an audit guide prepared by the Committee of Governmental Accounting of the American Institute of Certified Public Accountants (AICPA) and *Government Auditing Standards*, issued by the Comptroller General of the United States. Among the other resources used in the preparation of the financial statements, the Management Services Department Staff has given particular attention to the *Governmental Accounting, Auditing and Financial Reporting* (GAAFR) issued by the Government Finance Officers Association of the United States and Canada (GFOA), and Governmental Accounting Standards Board (GASB) pronouncements.

The Comprehensive Annual Financial Report is presented in four sections: introductory, financial, statistical, and compliance. The Introductory section contains this letter of transmittal and information about the City's organization and principal officials. The Financial section is composed of the independent auditor's report, the Management's Discussion and Analysis, the basic financial statements, required supplementary information, and other supplemental information. The Statistical section includes selected financial and demographic information, generally presented on a multi-year basis.

The City is also required to undergo an annual single audit in conformity with the provisions of the Single Audit Act Amendments of 1996, the State Single Audit Implementation Act, and U.S. Office of Management and Budget Circular A-133, *Audits of States, Local Governments, and Nonprofit Organizations*. Information related to the compliance audit and the schedule of expenditures of federal and state awards are included in the Compliance section of this report.

The City participates in the Certificate of Achievement for Excellence in Financial Reporting awards program sponsored by the Government Finance Officers Association of the United States and Canada. In order to be awarded a Certificate of Achievement, a government unit must publish an easily readable and efficiently organized comprehensive annual financial report, whose contents conform to program standards. Such reports must satisfy both accounting principles generally accepted in the United States of America and applicable legal requirements.

The City's Comprehensive Annual Financial Report for the year ended June 30, 2004, was awarded a Certificate of Achievement for Excellence in Financial Reporting. A Certificate of Achievement is valid for a period of one year only. We believe our current Comprehensive Annual Financial Report meets the Certificate of Achievement Program's requirements and intend to submit it to the GFOA to determine its eligibility for another certificate.

ECONOMIC CONDITION AND OUTLOOK

The City of Salisbury is located in the heart of North Carolina. Situated along the I-85 corridor which links the community to the state's economic centers, the City is located midway between two major metropolitan regions: Charlotte to the south, and the Piedmont Triad (Greensboro, High Point and Winston-Salem) to the north. In addition to the interstate highway, the City is also served by two major rail lines which intersect in town and an airport on the outskirts of the community. This location offers widely diversified employment opportunities for residents in areas ranging from financial, educational, medical, and governmental to industrial and research activities. In summary, the diverse local economic base and long-term planning coupled with the region's advantages have made the City an attractive place to do business and to live.

The location also allows the City to serve as a trading and distribution center for the County and portions of surrounding counties. The nation's economy slowed in the past few years and the economy in Salisbury and Rowan County was adversely affected. However, the local economy has recovered quite well. Gross retail sales in Salisbury for the twelve months ended June 30, 2005, increased by \$134,218,441, or 19 percent from the prior fiscal year to \$840,946,943. Gross retail sales in Salisbury were higher in FY05 than any fiscal year in history. Salisbury's retail sales helped to drive total sales for Rowan County to \$1,291,606,740, \$167,143,756 (14.9%) higher than FY04. Continuing additions to the areas newest retail centers and renovations to the Salisbury Mall have led to this surge in the area's retail sales and should help Salisbury to continue to thrive in the future.

Another sign of a positive economic outlook for the future of Salisbury and Rowan is the improvement in local unemployment rates, which is discussed in the Management's Discussion and Analysis.

The downtown business district continues to be a thriving retail center for area merchants. The City supports and encourages the revitalization of the downtown business district that began in the early 1980's. Since that time a total of over \$87 million has been invested in the redevelopment of Salisbury's downtown. In the downtown area, 95% of the first floor business and retail space is currently occupied. During FY05 the State Department of Transportation replaced the East Innes Street bridge that serves as a gateway to the downtown with a beautiful, new, landscaped bridge that further enhances the downtown business district. FY05 also saw the renovation of the Washington Building which houses a graphics/web design firm that has added 35 jobs to

the downtown area. The story of downtown Salisbury is one of public-private partnerships committed to maintaining our place as one of the best downtown districts in North Carolina.

The City's proximity to the State's metropolitan regions provides many advantages and challenges. The Piedmont is one of the country's largest growth corridors. The City's management, the City Council, and the citizens continue to explore and develop goals and plans to keep the City of Salisbury financially sound while providing the services domestic and corporate citizens require.

MAJOR INITIATIVES

In October, 2004, the City of Salisbury's Council and Management Team received the results of a recently completed citizens' survey. Responses from the surveys indicated that our citizens have a high level of satisfaction with the City's police services, fire services, and trash, recycling, and yard waste collection. The area of most concern to the citizens was the condition of the City's streets. City Council and the Management Team used our citizens' comments to formulate goals and objectives for the City at the annual Future Directions and Goal Setting Conference in February, 2005. City management and staff have been working hard toward meeting those goals with the financial resources that are available. Areas of progress that are worth noting are the continued revitalization effort of the City's downtown area, neighborhood improvements, the completion of a new water treatment facility, and the creation of a new local government cable television channel. Also, the various departments that make up City government continue to thrive, as evidenced by the receipt of several national, state, and local awards.

The revitalization of Salisbury's downtown area continues to surge ahead. Over five million dollars was invested into the downtown during FY05 by various public and private organizations. These investments included eleven new facades and five general building additions/renovations. Salisbury's downtown added eleven new businesses and netted eleven new jobs (cumulative effect of job gains and losses) in the past fiscal year. The City has worked with Downtown Salisbury, Inc. to bring even more people to the downtown through the creation of a new downtown Farmers Market and increasing the number of festivals held in the downtown area. The City completed a downtown streetscape enhancement project in the Council Street area. This project included sidewalk improvements, decorative street lights, and other enhancements and was funded primarily by a grant from the State of North Carolina Department of Transportation. The City's downtown revitalization effort is admired statewide, as evidenced by the receipt of two top awards in the latest North Carolina Main Street Awards competition.

The improvement of City neighborhoods and communities is one of City Council's foremost goals. The City is utilizing its Consolidated Plan for Housing and Community Development Needs (updated in May 2005) to plan how to best use federal and local community development funds. Two of the City's key projects of the Community Development department have been in the Jersey City and the West End neighborhoods. The City built new homes and renovated several distressed properties in low to moderate income areas in FY05. These homes are then sold to first-time home buyers. The City also has worked to improve the appearance of the communities by planting trees and installing sidewalks. The revitalization in the Jersey City neighborhood has received a Housing North Carolina Award that recognizes affordable housing developments that serve as models for other communities. These neighborhood projects are meeting the goals of the City's Vision 2020 plan and Council goals of putting City residents in new housing and increasing the City's tax base.

The City completed construction of a new water treatment facility in fiscal year 2005. The new facility utilizes new, state-of-the-art Actiflo technology to provide cleaner water to our customers. The new facility also increased the City's maximum treatment capacity, which will aid our continuing transformation from a small municipal Water and Sewer Department to a diversified, broad-based, county-wide service provider.

In April, 2005, the City, Rowan County, and other municipalities in the county launched Access 16, a new local government and education cable television channel. While the day-to-day operations of Access 16 are being handled by City of Salisbury staff, the station is managed by a Board of Directors comprised of representatives from all of the participating local governments. Currently, the City is using the channel to televise Council meetings on a tape-delayed basis, post employment opportunities, and show educational programs for city residents and customers of the Water and Sewer system. Council strongly supports Access 16 as a cost effective means to provide a wide array of information to our citizens and utility customers.

City Council also desires to maintain quality management of the City and each of its departments. One way of validating the quality of a City department is to seek national, state, and local recognition. The Police Department was recognized as a “Flagship” agency while earning its fifth accreditation in FY 2005. The Commission on Accreditation for Law Enforcement Agencies designates an agency as “Flagship” if no problems are found during the accreditation process. The Salisbury Police Department was one of the first agencies in the country to receive this designation. The Parks and Recreation Department also completed its re-accreditation process in FY05. Salisbury Parks and Recreation is one of only three departments in North Carolina and one of 60 in the United States that are nationally accredited. The City was awarded Rowan County Employer of the Year Award by the Employment Security Commission for its efforts to hire, train, and retain deserving employees. The City’s Management Services Department continues to excel as well, winning awards for both the Annual Budget and the Comprehensive Annual Financial Report from the Government Finance Officers Association of the United States and Canada.

FUTURE DEVELOPMENTS

The City’s downtown revitalization is far from complete. The Downtown Master Plan Committee recently completed a market-driven plan that will guide development for the next twenty years. Projects scheduled to be completed during FY06 include the construction of the Firehouse Urban Lofts, a new mixed-used development that will include condominiums and shops. Other future developments include the potential revitalization of the former Empire Hotel, which is near the center of the downtown area. That renovation would be a major project in the comprehensive Downtown Salisbury Master Plan.

Even though our citizens are pleased with their police and fire services, the City will take major steps to further enhance the quality of both departments in FY06. The City is currently in the process of renovating and expanding its police station. The project will add 14,000 square feet to the station and is scheduled to be completed in the fall of 2006. The City will also build its fourth fire station. The new station is needed to maintain adequate response times and to maintain the City’s excellent insurance rating. The police station will cost approximately \$3 million and will be financed through an installment purchase agreement. The \$1.2 million fire station will be paid for with General Fund surpluses generated in the last three fiscal years.

The City will continue to participate in the Local Government Performance Measurement Project being administered by the School of Government of the University of North Carolina at Chapel Hill. The purpose of the project is to provide an external context in which to analyze local government performance and provide a catalyst for service and process improvements. The following services are included in the benchmarking project: police services, emergency communications, asphalt maintenance and repair, residential refuse collection, household recycling, yard waste collection, fleet maintenance, human resources and fire services. The City hopes to lift its overall performance by comparing specific costs and processes against identical costs and processes of the other participating jurisdictions. City goal-setting and evaluation, service level determination and the residents’ collective experience with Salisbury City services will all be enhanced by participating in the recurring comparison of uniform measures of performance between local governments in North Carolina.

REPORTING ENTITY

In conformity with the standards of the Governmental Accounting Standards Board, this Report includes all funds of the City, as well as its component unit. The City of Salisbury (as legally defined) is considered to be a primary government. Current governmental standards for accounting and financial reporting require inclusion of the primary government as well as its component unit in a published comprehensive annual financial report. The component unit is a legally separate entity for which the primary government is primarily financially accountable or for which the nature and significance of their relationship with the primary government are such that their exclusion would cause the reporting entity's financial statements to be misleading or incomplete.

The primary government is considered financially accountable if it appoints a voting majority of the organization's governing body; and 1) it is able to impose its will on that organization; or, 2) there is a potential for the organization to provide specific financial benefits to, or impose specific financial burden on, the primary government.

The discretely presented component unit, Downtown Salisbury Inc., is reported in a separate column in the government-wide financial statements to emphasize that it is legally separate from the primary government and to differentiate its financial position, results of operations, and cash flows from those of the primary government.

SERVICES PROVIDED

The City of Salisbury provides a full range of municipal services allowable under State law including law enforcement, fire protection, planning and development services, zoning and code enforcement, recreation centers and parks, cemeteries, street maintenance, and sanitation. In addition to these general government activities, the City provides and maintains water and sewer utilities and operates a mass transit system. This report includes all the City's fiscal activities in maintaining these services.

GOVERNMENT STRUCTURE

The City employs a Council-Manager form of government as provided in the City's Charter. The governing body consists of five council members, elected on a nonpartisan basis at large for a two-year term. The Council elects the Mayor from among them. The Mayor is usually the council member receiving the highest number of votes in the general election. Elections are held in November of odd numbered years. The City Manager (the chief executive officer) is appointed by and serves at the pleasure of the Mayor and Council. The Mayor and Council adopt a balanced budget and establish a tax rate for the support of City services prior to the beginning of each July 1 to June 30 fiscal year. The City Manager administers City programs in accordance with local policy and the annual budget.

ACCOUNTING SYSTEMS AND BUDGETARY CONTROL

In developing and evaluating the City's accounting systems, consideration is given to the adequacies of internal controls. Internal accounting controls are designed to provide reasonable, but not absolute, assurance regarding: (1) the safeguarding of assets against loss from unauthorized use or disposition; and (2) the reliability of financial records for preparing financial statements and maintaining accountability for assets. The concept of reasonable assurance recognizes that: (1) the cost of a control should not exceed the benefits likely to be derived; and (2) the evaluation of costs and benefits requires estimates and judgments by management.

All internal control evaluations occur within the above framework. We believe the City's internal accounting controls adequately safeguard assets and provide reasonable assurance of proper recording of financial transactions.

As a recipient of federal and state awards, the City is also responsible for ensuring that an adequate internal control structure is in place to ensure compliance with applicable laws and regulations related to those programs. This internal control structure is subject to periodic evaluation by management. As a part of the City's single audit described earlier, tests are made to determine the adequacy of the internal control structure, including that portion related to federal and state awards, as well as to determine that the City has complied with applicable laws and regulations. The results of the City's single audit for FY05 provided no instances of material weaknesses in the internal control structure or significant violations of applicable laws and regulations.

Budgetary control is maintained at the departmental level by the encumbrance of estimated purchase amounts prior to the release of purchase orders to vendors. Purchase orders which result in an overrun of departmental balances are not released until additional appropriations are made available. Open encumbrances lapse at year end and are reinstated against the subsequent year's appropriation. They are shown as a reservation of fund balance at June 30, 2005.

BASIS OF ACCOUNTING

The City's accounting records for governmental funds are maintained on a modified accrual basis whereby revenues are recognized when measurable and available, and expenditures are recognized in the accounting period in which the liability is incurred except for unpaid interest on general long-term debt. Proprietary fund and pension trust fund revenues and expenses are recognized on the accrual basis whereby revenues are recognized in the accounting period in which they are earned, and expenses are recognized in the period in which they are incurred. Fiduciary funds are accounted for on the modified accrual basis, the same as for governmental funds.

FUND ACCOUNTING

Governmental accounting systems should be organized and operated on a fund basis. A fund is defined as a fiscal and accounting entity with a self-balancing set of accounts, recording cash and other financial resources together with all related liabilities and residual equities or balances, and changes therein, which are segregated for the purpose of carrying on specific activities or obtaining certain objectives in accordance with special regulations, restrictions, or limitations. Thus a governmental unit is a combination of several distinctly different fiscal and accounting entities, each having a separate set of accounts and functions.

FUND AND ACCOUNT GROUP CATEGORIES

Governmental funds are those through which governmental functions typically are financed. The acquisition, use, and balances of the government's expendable financial resources and the related current liabilities, except those accounted for in the proprietary fund, are accounted for through governmental funds. The governmental fund measurement focus is based upon determination of financial position and changes in financial position (sources, usage, and balances of financial resources), rather than upon net income determination. The statement of revenues, expenditures, and changes in fund balance is the primary governmental fund operating statement. It may be supported or supplemented by more detailed schedules of revenues, expenditures, transfers, and other changes in fund balance.

Proprietary funds are used to account for a government's ongoing organizations and activities which are similar to those found in the private sector. All assets, liabilities, equity, revenues, expenses, and transfers relating to the government's business and quasi-business activities (where net income and capital maintenance

are measured) are accounted for through proprietary funds. The generally accepted accounting principles used here are those applicable to similar businesses in the private sector and the measurement focus is upon determination of net income, financial position, and cash flows.

Fiduciary funds are used to account for assets held by governmental units in a trustee capacity or as an agent for individuals, private organizations, other governmental units and/or other funds. Agency funds are purely custodial in nature and do not measure the results of operations. Pension trust funds are accounted for in essentially the same manner as proprietary funds.

FINANCIAL MANAGEMENT

The City's financial management program continues to provide the citizens of the City with an approach which has served to enhance the City's excellent financial position by:

1. Investing all available funds not needed on a daily basis in order to maximize interest earnings, and
2. Allocating City resources only to program areas that meet community needs, and
3. Monitoring these program areas to ensure they are carried out within authorized levels.

This financial management program allows the City to achieve its goal of expanded and improved services to the citizens of Salisbury. As discussed in the Management's Discussion and Analysis, the City continues to receive excellent bond ratings from various rating agencies. This is a reflection of the City's continued sound financial condition.

CASH MANAGEMENT

The City's temporary idle cash is invested in interest-bearing demand deposits, certificates of deposit, obligations of the U.S. Treasury and federal agencies, banker's acceptances, commercial paper, and the North Carolina Capital Management Trust. All revenues received are deposited the same day in a consolidated interest-bearing bank account. This bank account is drawn upon to meet all payroll and payable obligations, and the City maintains in this account only as much money as is required to meet current obligations. All other idle cash is invested in instruments authorized by the General Statutes of North Carolina. The average yield on investments was 1.97% for the year ended June 30, 2005.

The City's investment policy is to minimize credit and market risks while maintaining a competitive yield on its portfolio. Accordingly, deposits were either insured by federal depository insurance or collateralized. The majority of the City's investment portfolio at June 30, 2005, is classified in the category of lowest credit risk as defined by the Governmental Accounting Standards Board. The remainder of the City's investment portfolio is exempt from risk categorization because it was invested in the NC Capital Management Trust, an SEC registered mutual fund where the City is only a shareholder of a percentage of the fund and does not own any identifiable securities.

RISK MANAGEMENT

In the efforts to maintain services at a reasonable cost to the citizens of Salisbury, the City has developed and maintained a risk management program that encompasses nearly every aspect of the City's operations. Insurance liability coverage is obtained through a combination of commercial insurers, the insurance pool administered by the NC League of Municipalities, and self-insurance. This approach has allowed the City to obtain maximal amounts of property and liability coverage at the most economical cost.

CONCLUSION

The City is well on the way to overcoming the effects of the slowing economy and the withholding of revenues by the Governor of North Carolina. The local economy is already strong and getting stronger, as

evidenced by the robust increase in gross retail sales during FY05. Also, the City has been fortunate to continue to experience growth in its revenue base through development and annexation during FY05. This growth has helped to reduce the effects of the loss of other revenues and assure our citizens that the City will be able to continue to provide the quality of services that they have come to expect.

The future continues to hold many uncertainties. Federal and State mandates continue to impact local governments in all areas of operations. The citizens of Salisbury have come to expect and appreciate the high level of service they enjoy. The management of the City is necessarily charged with managing its resources in the best possible manner to deliver those services at a cost citizens will agree to bear. The City will continue to focus on its core values and provide quality services to our citizens. The City continues to face rising operational costs while guarding against unnecessary tax and utility rate increases. All City operations are being asked to contribute to the focused effort to maintain our ability and readiness to respond to our citizens. As long as revenue growth rates do not decline unexpectedly, the costs of providing services do not escalate more rapidly than in previous years, and the City continues to evaluate all existing and potential revenue options, including annexations, we can accomplish this task. Overall, continued growth and policy adjustments that have been initiated by City Council will continue to provide the City a stable financial position from which we may serve the citizens of Salisbury for years to come.

ACKNOWLEDGMENTS

We wish to thank the Mayor, City Council and the City Manager for the support and trust they have given the Management Services Department. On behalf of the team of the Management Services Department, we promise our continued dedication to proving ourselves worthy of their support and trust. We are confident that together we can provide the citizens of Salisbury with responsible and progressive financial management.

For the preparation of this Report, the City is especially indebted to Mark D. Drye, Management Analyst, and Renee A. Pierson, Accountant. Without their assistance, this Report could not have been prepared on a timely basis.

Each year, we strive to prepare a financial report which provides a meaningful analysis and disclosure of the City's financial activities and financial position. We believe this Report conforms substantially to the standards of financial reporting of the appropriate professional organizations.

Respectfully submitted,

John A. Sofley, Jr.
Finance Director

S. Wade Furches
Finance Manager

Certificate of Achievement for Excellence in Financial Reporting

Presented to

City of Salisbury,
North Carolina

For its Comprehensive Annual
Financial Report
for the Fiscal Year Ended
June 30, 2004

A Certificate of Achievement for Excellence in Financial Reporting is presented by the Government Finance Officers Association of the United States and Canada to government units and public employee retirement systems whose comprehensive annual financial reports (CAFRs) achieve the highest standards in government accounting and financial reporting.



Nancy L. Zielke

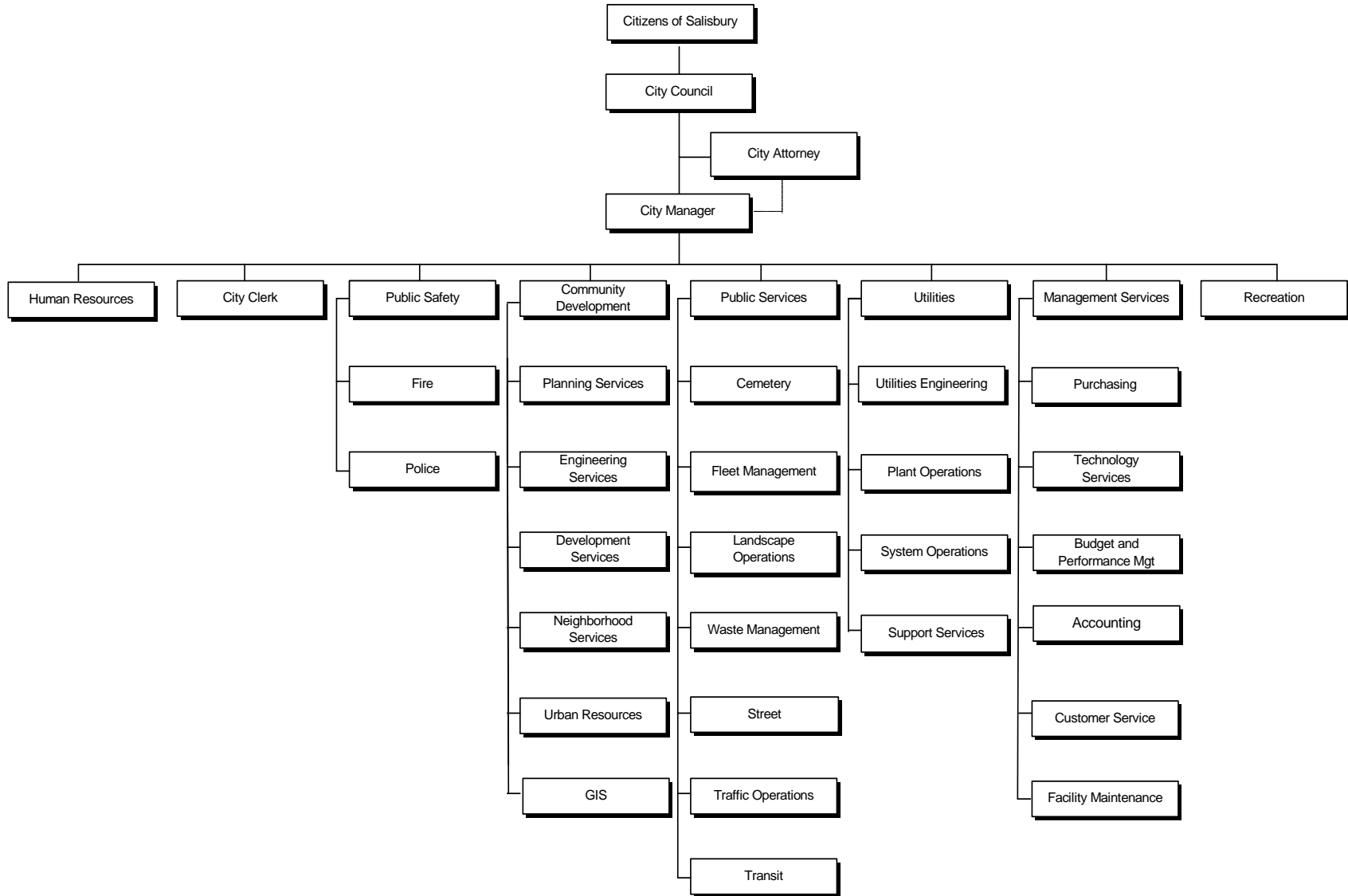
President

Jeffrey R. Emen

Executive Director

CITY OF SALISBURY

ORGANIZATIONAL CHART



CITY OF SALISBURY
LIST OF PRINCIPAL OFFICIALS

June 30, 2005

Mayor	Susan W. Kluttz
Mayor Pro Tem	Paul B. Woodson, Jr.
Council Member	William R. Burgin
Council Member	William R. Kennedy
Council Member	Mark N. Lewis
City Manager	David W. Treme
Assistant City Manager – Utilities	H. Matthias Bernhardt
City Clerk	Myra B. Heard
Management Services Director	John A. Sofley, Jr.
Fire Chief	Robert A. Parnell
Land Management and Development Director	Daniel J. Mikkelson
Technology Services Manager	C. Michael Crowell
Human Resources Director	Melissa H. Taylor
Police Chief	L. Mark Wilhelm
Public Services Director	Vernon E. Sherrill
Purchasing Agent	Dewey D. Peck
Recreation Director	Gail Elder-White
Utilities Director	John C. Vest

FACTS AND INFORMATION ABOUT THE CITY OF SALISBURY, NORTH CAROLINA

LOCATION

Salisbury, the county seat of Rowan County, is located in the heart of the beautiful Piedmont area, the industrial heart of the State. Salisbury is located midway between Charlotte and Winston-Salem, 296 miles from Atlanta, Georgia and 368 miles from Washington, D.C.

CLIMATE

The climate of the Salisbury area is moderate, a definite advantage to those who live and work here. The massive mountains of Western North Carolina form a natural barrier against the cold east-west winds. While definitely southern in climate, Salisbury is far enough north, and has sufficient altitude to escape the humid summers of many other southern regions. Extremes in climate are very rare and short-lived. In winter the high temperature is about 50 degrees, with a low around 32 degrees. The total snowfall is normally about 6 inches each year. In the summer, the high averages about 87 degrees, with a low of 66 degrees.

POPULATION

The population of the City of Salisbury has increased steadily during the past decade. This is due to both annexations and internal growth stimulated by the local economy. Population currently is estimated to be 28,249 based upon estimates from the North Carolina Office of State Planning.

HISTORY

Scotch-Irish, who originally settled in Lancaster County, Pennsylvania, moved down the "Great Wagon Road" 435 miles to Trading Ford on the Yadkin River to become the first settlers in Rowan County.

The County of Rowan was established in 1753. At this time, Rowan included all territory north to Virginia and east to what we know now as Guilford County and west to the mountains. Eventually, 26 counties were formed from Rowan. Rowan County was named for Matthew Rowan, acting governor for the colony in 1753.

The deed for Salisbury is dated February 11, 1755. The court center, called prior to this time Rowan Court House, was a bustling little village of seven or eight log cabins, a court house, jail and pillory, according to Governor Arthur Dobbs who visited here in late 1755.

The Court House dates to 1753 and consists of deeds, marriages, and miscellaneous records of value. Papers formerly in the Clerk's Office such as the early court minutes are stored at the State Department of Archives in Raleigh. Familiar names in American history adorn these records.

Andrew Jackson, Richard Henderson, William R. Davis, Daniel Boone, Lord Cornwallis, Richard Caswell and many other prominent local families as the Barkleys, Hoovers, and Polks, all ancestors of presidents or vice-presidents, appear time and again in the deeds and court minutes of the county.

Two years before the national Declaration of Independence and one year before the Mecklenburg Declaration of Independence, a group of patriotic citizens of Rowan County, serving as a Committee of Safety, on August 8, 1774, adopted the Rowan Resolves containing the pioneer element toward liberty and independence from Britain. These resolves reached the highest note of any passed in the colony in calling for the abolishment of the African Slave trade and urging the colonies to "unite in an indissoluble union and association". These resolves are located in the State Archives and are the only ones of the many passed in this period that are preserved.

So many legends and lifestyles have been passed down over the passage of time. Daniel Boone began his exploration of the Blue Ridge Mountains from here in Salisbury. Near the present-day library is the small office where Andrew Jackson studied law and was admitted to the bar before he moved westward.

For all the struggles and hardships our ancestors endured, they have provided Salisbury with character and a rich heritage.

GOVERNMENT

The City of Salisbury's government is organized according to the Council-Manager form of government. The City Council, which formulates policy for the Administration of the City, together with the Mayor, constitutes the governing body of the City. The five (5) members are elected to serve two (2) year terms of office. The Mayor is elected from the five (5) Council members. The Mayor presides at City Council meetings. Also, a Mayor Pro Tem is elected by City Council members from the five (5) to serve as Mayor during her absence or disability.

The City Council appoints the City Manager to serve as the City's Chief Executive Officer. The City Manager is responsible for implementing the policies of the City Council, directing business and administrative procedures, and appointing departmental officers. At the present time, the City Manager is assisted by the City Clerk and eight staff departments: Management Services, Human Resources, Fire, Police, Land Management and Development, Public Services, Parks and Recreation, and Public Utilities. The City provides a full range of municipal services allowable under State law including law enforcement, fire protection, zoning and code enforcement, recreation centers and parks, cemeteries, street maintenance, sanitation, and water and sewer systems.

UTILITIES

Salisbury operates its own water and sewer system. The Yadkin River, which forms the northeast boundary of Rowan County, provides Salisbury with an abundant supply of good water. The average daily flow is nearly 2 billion gallons per day, and the minimum recorded one-day flow is 150 million gallons. The Salisbury water system, conventional in design and closely controlled, has a treatment capacity of 12 million gallons per day. Average daily usage during fiscal year 2005 was 6.97 million gallons per day. The filter plant is designed for expansion as needed to 18 million gallons per day by adding pumping and settling capacity. An arterial system of distribution mains has been constructed to assure maximum fire protection to all parts of the city.

The Salisbury water system supplies the following towns in Rowan County: Spencer, East Spencer, Granite Quarry, Rockwell, China Grove, Landis, and Kannapolis and service has been extended to a number of industrial sites well beyond the city limits. The water supply meets all federal and State quality requirements.

Salisbury's three wastewater treatment facilities serve as the area's regional wastewater utility with service expansion to the towns of Landis, China Grove, Spencer, East Spencer, Granite Quarry, and Rockwell. Total daily treatment capacity in 2005 was 12.5 million gallons. Average daily treatment in FY 2005 was 8.44 million gallons per day.

Other utilities are provided by Duke Energy, Piedmont Natural Gas Company, Bellsouth Telephone, CT Communications, and Time Warner Cable.

TRANSPORTATION

Salisbury, nearly the geographic and population center of North Carolina, is located on Interstate Highway 85,

42 miles from Charlotte, 52 miles from Greensboro and 39 miles from Winston-Salem. It is the crossroads of I-85, U.S. 29, 52, 70, 601 and N.C. 150. Over 3.5 million people live within 90 miles of Salisbury, 1.75 million within 55 miles and 60% of the population of the United States within an overnight truck haul. The seaports of Wilmington, Morehead City, Charleston, and Norfolk are less than a one-day truck haul away.

Rowan County Airport, three (3) miles from downtown Salisbury, has a 5,800 ft. x 100 ft. paved and lighted runway. Hangar space and private plane servicing are available.

Two major commercial airports are within a one-hour drive of Salisbury – Charlotte-Douglas International in Charlotte and Piedmont Triad International (PTI) in Greensboro. With the planned new FedEx package-sorting facility at PTI, Salisbury is well positioned for providing local businesses a critical link in their logistics chain. Additionally, these airports provide regular air passenger services to all parts of the United States via AirTran, American, Continental, Delta, United, and US Airways. There are also non-stop, international flight options available to Frankfurt, London, and San Juan, among other global destinations.

Greyhound provides bus service to Salisbury with daily arrivals and departures. Local bus service is provided by the City's Transit System.

Amtrak provides rail transportation with service on the Piedmont and the Carolinian from New York City to Charlotte, North Carolina. Arrivals and departures are from The Depot, a renovated station of the Salisbury Railroad Station Depot, originally built in 1907.

MOTELS

An ideal area for meetings and conventions, Salisbury has fourteen (14) motels, with over 1,100 rooms, and two (2) bed and breakfast establishments in our historic district.

EDUCATION

Salisbury is home to two (2) colleges and a technical school. Catawba College was founded in Newton, North Carolina in 1851, and moved to Salisbury in 1925. Catawba has thirty (30) buildings comprising a physical plant unsurpassed in the East for a college of this size and style. It has a total enrollment of 1,500 Liberal Arts students and is affiliated with the United Church of Christ.

Livingstone College was founded in 1879, and has 1,000 Liberal Arts students. It is supported by the African Methodist Episcopal Zion Church.

Rowan-Cabarrus Community College offers two-year educational programs leading to the associate's degree in applied science. In addition, one-year diploma programs are offered in five fields. There is a total enrollment of approximately 4,700 full-time students.

In addition to the Salisbury-Rowan public school system, there are several private and church related schools.

ARTS AND ENTERTAINMENT

The cultural atmosphere of the Salisbury area is significantly enriched by the outstanding programs of Catawba and Livingstone Colleges and the other colleges in the area. Each year the Catawba College Shuford School of Performing Art brings a minimum of four musical events to Salisbury. Catawba's fine Drama department offers several professional type drama productions each year. Livingstone College also has a cultural series that brings artists to the community as well as an excellent drama group, The Julia B. Duncan Players.

The Piedmont Players, a community little theater organization, provides excellent entertainment as well as a chance to participate in both its acting and technical activities. They have completely restored the historic Meroney Theater, built in 1905, for their home. The Piedmont Players present five shows each season. In addition to these five shows, all fourth and fifth graders in the Rowan-Salisbury School System attend the theater for an annual production that is cast entirely with children. Piedmont Players has received an award at the annual North Carolina Theatre Conference for having the best community theater in the state.

The Salisbury-Rowan Symphony, consisting of musicians from the area, presents four concerts each season. In addition to participation in the regular concert series, the string quartet of the Salisbury Symphony visits the elementary schools to present programs. The object of this mini-concert series is to give the students some knowledge of music and famous composers.

Rowan-Cabarrus Community College participates in the North Carolina Visiting Artist Program. Each year a professional artist is employed and in residence at the college. Concerts and musical programs are provided regularly by many artists throughout the state as well as the Visiting Artist. In addition, Rowan-Cabarrus Community College sponsors a Folk Heritage Center.

This center serves as a network for professional and local folk artists and presents classes, concerts, and other folk artist activities for the general public.

COMMUNITY FACILITIES

Salisbury is served daily by The Salisbury Post. Four (4) radio stations provide for local programming. WBTV has a satellite newsroom located in Salisbury. Local reception provides coverage of all major networks in addition to cable television facilities.

A full-time year-round recreation staff offers activities for both young and old. In addition to organized activities, the City provides several parks and facilities for general use.

The Salisbury Community Park and Athletic Complex opened in April 2001. Amenities at the 314 acre park include baseball/softball fields, soccer fields, picnic shelters, play structures and a nine-acre lake suitable for fishing and equipped with a handicap accessible pier.

City Park has two large playgrounds, tennis courts, a five (5) acre lake for fishing, picnic shelters, and a Recreation Center that offers programs/classes throughout the year. Salisbury has a Civic Center with a weight room, racquetball courts, auditorium, tennis courts and a handicap exercise trail.

Kelsey-Scott Park is a twenty-two (22) acre park located on Old Wilkesboro Road. It includes a nine-hole disc golf course, a baseball/softball field, an outdoor basketball court, and a picnic shelter. The Jaycee Sports Complex is a multi-use area with three (3) ball fields and an outdoor basketball court. The Miller Recreation Center located on West Bank Street has a play structure and an indoor basketball court. The Center offers programs throughout the year.

Hurley Park is a municipal garden which has a unique collection of plants to the area. The Park provides an educational experience as well as a pleasurable place to stroll.

SPECIAL EVENTS

Each year, the Salisbury-Rowan Chamber of Commerce presents the National Sportscasters and Sportswriters Awards Program. The program has been a big success. The National Sportscasters and Sportswriters Awards Program has attracted national attention to the City. Each year nationally renowned sportscasters and sportswriters visit Salisbury to attend the annual awards program.

